

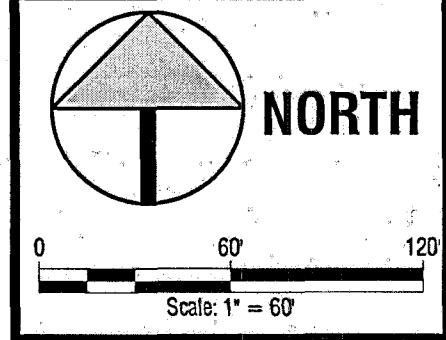
202601704

Civil Engineering
Surveying
& Beyond
Boundaries Unlimited Inc.
923 Cooper Ave., Ste. 201
Glenwood Springs, CO 81601
(T) 970.545.5252
www.bu-inc.com

Subsurface Utility Engineering (SUE)
Required Project: N/A
If "Yes", SUE Certification by:
Firm: N/A
Job #: N/A
Date: N/A

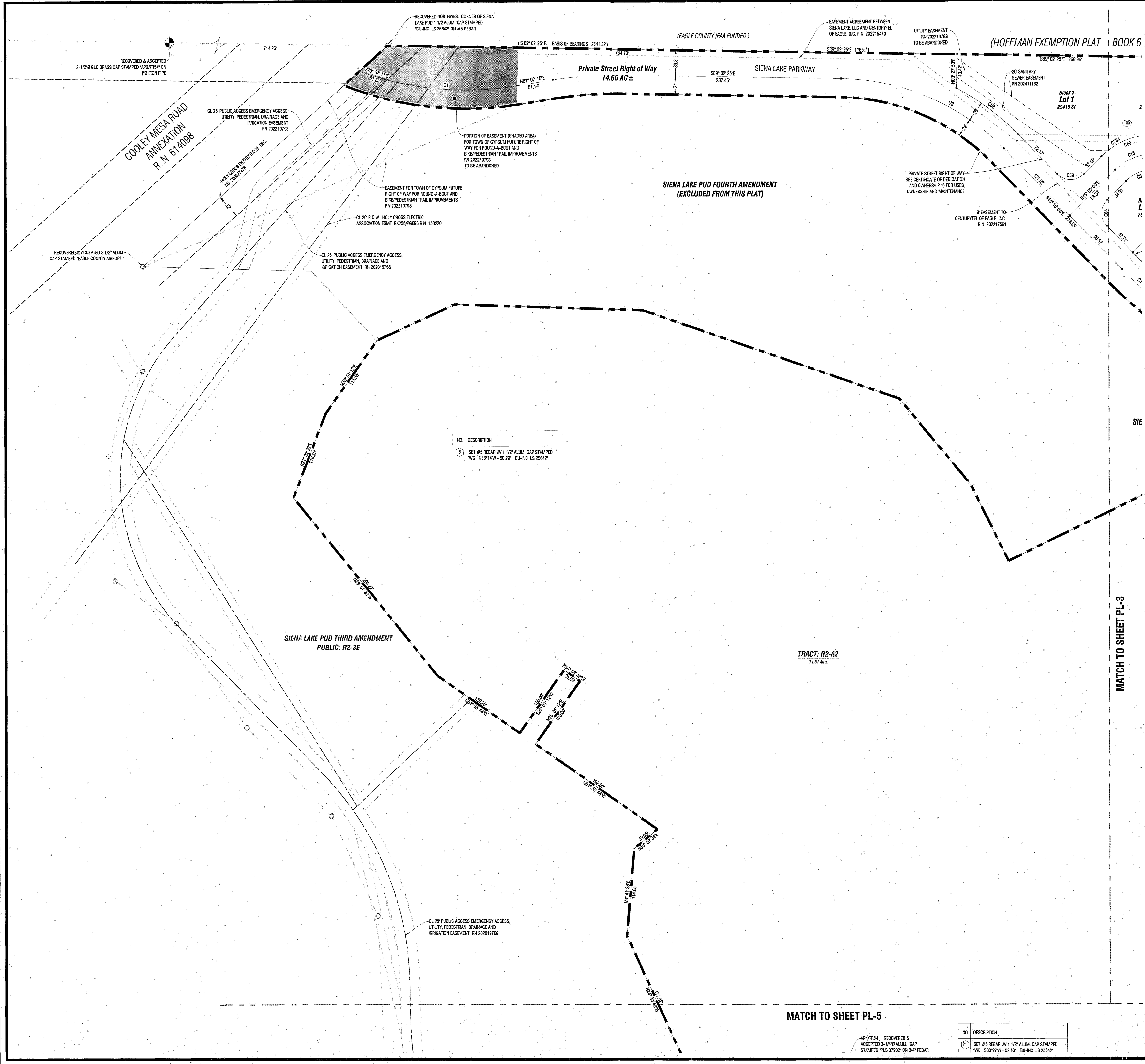
Engineer or Surveyor Seal

Client Information:
SIENA LAKE, LLC
PO BOX 5485
EAGLE, CO 81631
XXX.XXX.XXXX



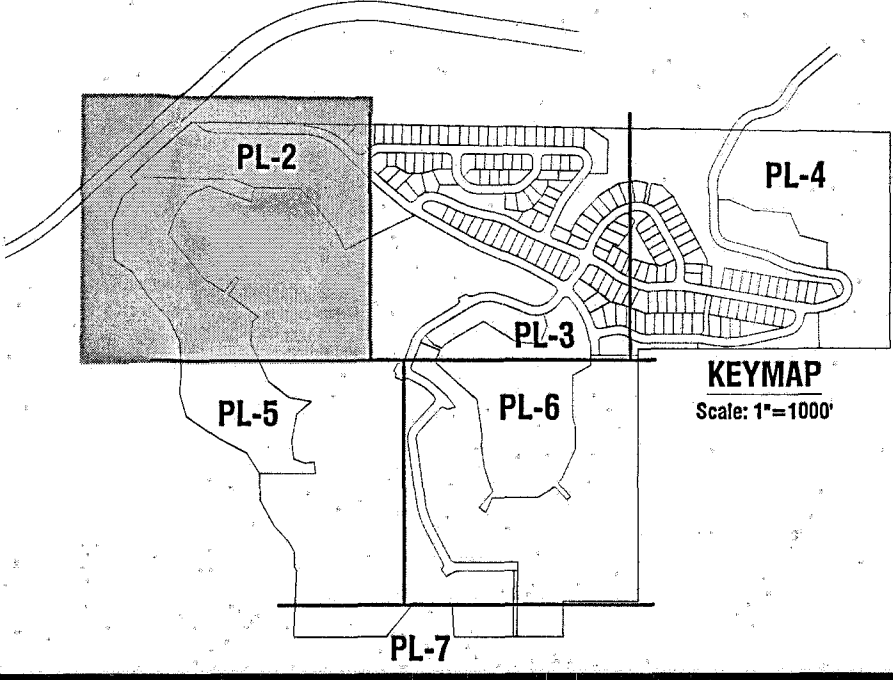
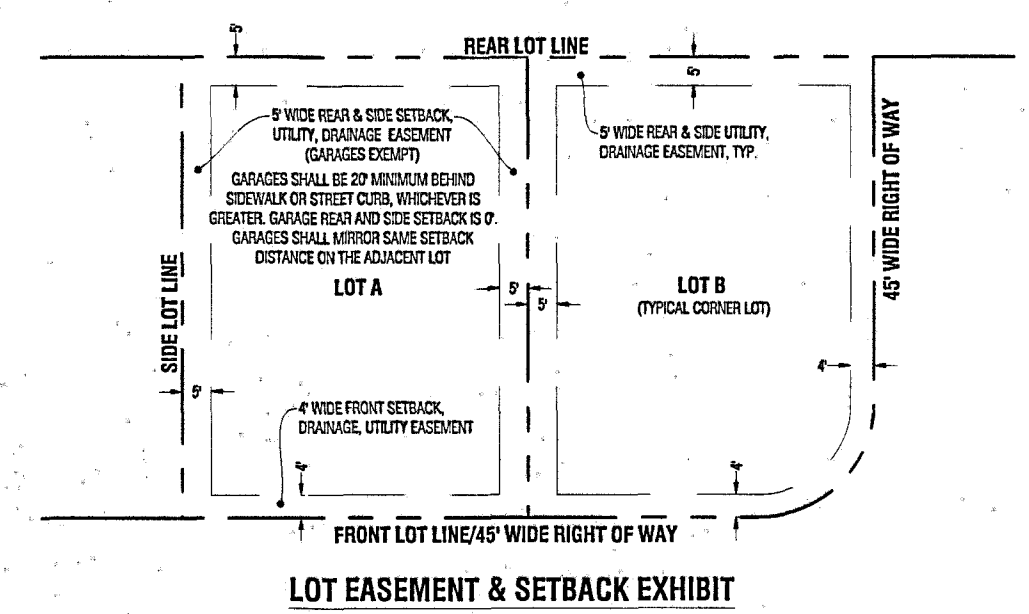
GYPSUM, COLORADO
Siena Lake PUD 5th Amendment
Excluding Tract: MU-3A, Lots 14-23 Block 1 and Lots 1-12 Block 2
Final Plat

By: APJ
Revision: Addresser Comments from town
Date: 7/15/26
No. 1
PROJECT NO. 20040
Design: BUI
Drawn: APJ
Title: 12/28/25
Sheet: PL-2
File Name: siena lake pud 5th amendment.dwg



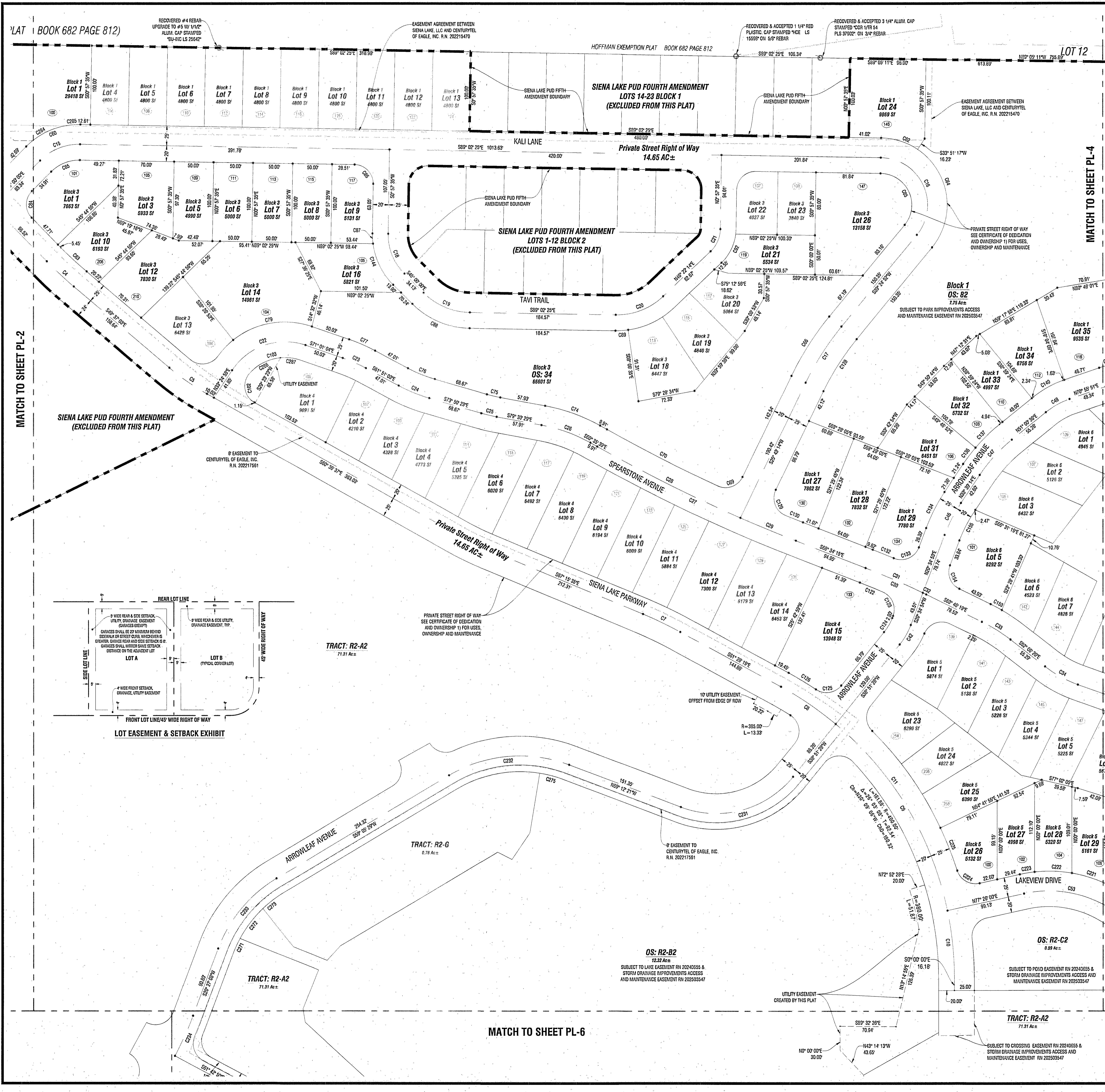
NO.	DESCRIPTION
8	SET #5 REBAR W/ 1 1/2" ALUM. CAP STAMPED "WC H88*14W - 50.29 BU-INC LS 25542"

SEGMENT	LENGTH	RADIUS	DELTA	CHORD DIR.	CHORD LEN.
C1	202.62	400.00	29°01'21"	S84° 27' 04"E	200.49
C2	84.62	438.67	9°55'19"	N85° 59' 59"E	84.52
C3	234.52	300.00	44°47'21"	S69° 39' 45"E	228.59
C4	45.83	500.00	9°21'59"	S49° 59' 04"E	45.81
C15	55.19	70.00	45°47'35"	N87° 58' 47"E	54.69
C58	100.00	328.00	17°34'31"	N53° 02' 20"W	99.61
C59	33.01	24.00	50°44'55"	N89° 37' 52"W	34.16
C60	75.20	95.00	45°47'35"	N87° 58' 47"E	74.18
C64	37.39	24.00	80°15'04"	S9° 22' 28"W	33.72
C65	40.11	50.00	45°47'35"	S87° 58' 47"W	39.04
C284	55.68	95.00	34°10'55"	N82° 05' 28"E	55.84



NO.	DESCRIPTION
21	SET #5 REBAR W/ 1 1/2" ALUM. CAP STAMPED "WC S33*27W - 62.13 BU-INC LS 25542"

N:\Projects\202601704-Siena Lake PUD\dwg\Sienna Lake PUD 5th Amendment.dwg 7/15/2026 2:47 PM



PARCEL CURVE DATA

SEGMENT	LENGTH	RADIUS	DELTA	CHORD DIR.	CHORD LEN.
C4	46.83	500.00	5°21'59"	S46° 59' 04"E	46.81
C5	58.01	302.50	10°59'33"	S59° 09' 50"E	57.85
C6	44.10	380.00	6°38'59"	S53° 59' 06"E	44.08
C7	52.53	520.00	5°47'16"	S54° 21' 57"E	52.51
C8	83.82	420.00	11°28'05"	N59° 45' 17"W	83.69
C9	275.91	420.00	37°38'22"	N31° 12' 03"W	270.99
C10	90.89	420.00	12°23'51"	N6° 11' 59"W	90.70
C11	450.51	420.00	61°28'19"	S39° 34' 02"E	429.31
C15	56.19	70.00	45°57'39"	N67° 31' 47"E	54.69
C16	134.52	60.00	128°27'17"	S24° 49' 47"E	108.09
C17	84.37	353.00	13°41'38"	S32° 34' 03"W	84.17
C18	56.19	70.00	45°57'34"	S22° 31' 13"E	54.69
C19	65.34	85.00	44°02'23"	S67° 01' 13"E	63.74
C20	65.19	85.00	44°53'21"	N69° 39' 54"E	64.49
C21	31.70	40.00	45°24'33"	N23° 39' 54"E	30.82
C22	105.51	80.00	75°33'59"	N17° 11' 57"E	93.03
C23	32.00	200.00	9°10'00"	S58° 29' 03"E	31.99
C24	41.89	200.00	11°59'20"	S37° 50' 43"E	41.77
C25	19.79	200.00	5°40'00"	S76° 40' 28"E	19.78
C26	66.02	200.00	18°54'50"	S70° 03' 04"E	65.72
C27	278.44	200.00	75°58'59"	S54° 34' 57"E	278.21
C28	202.69	200.00	5°48'18"	S33° 29' 46"E	202.50
C29	75.89	200.00	21°02'22"	S37° 29' 03"E	75.84
C30	83.79	100.00	4°47'59"	S59° 10' 17"E	83.73
C31	78.99	100.00	4°31'31"	N69° 18' 29"W	78.99
C32	4.77	100.00	0°16'24"	N53° 54' 31"W	4.77
C33	42.71	200.00	11°59'54"	S37° 59' 22"E	42.64
C34	47.69	150.00	16°17'24"	S31° 15' 02"E	47.69
C42	28.49	90.00	18°08'24"	S29° 47' 16"W	28.38
C46	45.63	200.00	13°04'21"	N27° 01' 03"E	45.53
C47	60.59	200.00	17°21'22"	N42° 19' 59"E	60.39
C48	34.77	100.00	19°59'19"	N69° 58' 14"E	34.59
C49	35.91	100.00	20°34'30"	N31° 19' 00"E	35.72
C53	110.49	145.00	47°12'19"	S78° 57' 51"E	116.11
C60	76.20	95.00	45°57'39"	N67° 31' 47"E	74.19
C82	48.09	85.00	32°54'43"	S72° 35' 34"E	48.13
C84	141.77	85.00	95°33'34"	S9° 21' 56"E	125.99
C85	89.69	40.00	128°27'17"	N24° 49' 47"W	72.04
C86	89.22	373.17	13°41'52"	S32° 34' 07"W	89.00
C89	37.27	24.00	88°59'00"	N70° 21' 00"E	33.64
C70	157.39	1975.00	4°33'52"	N62° 52' 35"W	157.29
C74	74.29	225.00	18°54'33"	N70° 02' 55"W	73.92
C75	17.31	175.00	5°40'09"	S76° 40' 28"E	17.31
C76	38.82	175.00	11°59'20"	S37° 50' 43"E	38.59
C77	35.00	225.00	9°10'00"	S58° 29' 03"E	35.99

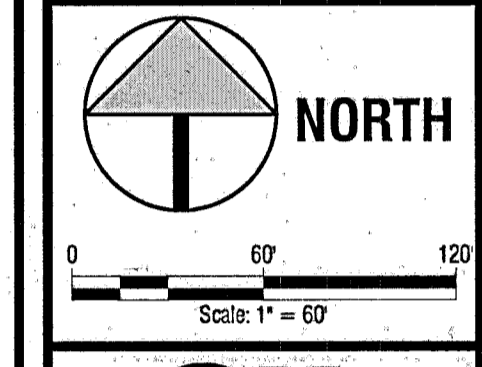
PARCEL CURVE DATA

SEGMENT	LENGTH	RADIUS	DELTA	CHORD DIR.	CHORD LEN.
C79	105.39	105.00	67°50'34"	N69° 18' 29"E	101.02
C83	44.49	475.00	67°50'34"	S49° 59' 04"E	44.47
C84	37.39	24.00	89°15'04"	S2° 22' 28"W	33.72
C85	40.11	50.00	45°57'39"	S67° 39' 47"W	39.04
C86	37.70	24.00	90°00'00"	N44° 02' 25"W	33.94
C87	12.99	90.00	8°16'12"	S3° 10' 31"E	12.99
C88	80.71	105.00	44°02'23"	S17° 01' 13"E	78.74
C89	163.03	105.00	69°57'29"	N79° 39' 13"E	162.02
C92	41.59	60.00	39°40'54"	S29° 31' 47"W	40.73
C102	42.89	24.00	102°38'00"	N6° 17' 33"W	37.47
C103	70.12	60.00	69°57'29"	N79° 39' 13"E	68.29
C122	31.29	900.00	1°49'49"	S37° 39' 23"E	31.28
C123	35.59	24.00	81°19'23"	S33° 34' 49"E	33.14
C124	20.59	65.00	18°09'24"	S39° 47' 30"E	20.49
C125	35.59	24.00	84°56'34"	S31° 19' 45"W	32.41
C126	40.49	440.00	5°16'21"	N69° 50' 08"W	40.48
C128	78.39	327.91	13°41'52"	S32° 34' 03"W	78.21
C129	39.21	24.00	99°38'49"	S21° 05' 09"E	34.59
C130	23.40	1975.00	0°40'44"	S59° 19' 53"E	23.40
C132	28.47	1025.00	1°35'29"	S37° 40' 28"E	28.47
C133	38.72	24.00	92°29'21"	N69° 49' 03"E	34.69
C134	51.34	225.00	13°04'21"	N27° 01' 03"E	51.22
C136	25.77	225.00	6°32'40"	N59° 59' 04"E	25.79
C137	42.39	225.00	10°47'42"	N49° 59' 45"E	42.39
C140	43.49	125.00	19°55'15"	N69° 59' 14"E	43.24
C141	27.62	125.00	12°39'22"	N77° 15' 39"E	27.58
C144	59.20	90.00	37°41'23"	S29° 09' 19"E	58.14
C153	15.99	234.82	3°53'39"	N61° 49' 28"W	15.99
C154	35.33	24.00	84°21'12"	N21° 35' 43"W	32.29
C155	41.07	180.00	13°04'21"	N27° 01' 03"E	40.99
C221	50.24	170.00	16°55'59"	N71° 37' 04"W	50.05
C222	47.69	170.00	16°04'13"	N69° 07' 07"W	47.53
C223	19.03	170.00	6°24'47"	S30° 38' 23"W	19.02
C224	35.51	24.00	84°40'49"	S59° 10' 59"E	32.36
C225	58.29	445.00	7°39'13"	S21° 32' 59"E	58.24
C231	156.94	125.00	71°59'11"	S74° 49' 33"W	148.63
C232	157.02	175.00	51°42'10"	S34° 59' 34"W	152.61
C233	118.02	175.00	39°38'21"	S39° 49' 19"W	115.79
C234	55.61	425.00	7°29'49"	S24° 12' 02"W	55.57
C234	55.69	55.00	34°10'55"	N52° 09' 28"E	55.84
C265	19.59	95.00	11°49'39"	N69° 04' 19"E	19.49
C266	44.80	60.00	42°52'34"	N53° 27' 47"E	43.68
C287	25.22	60.00	24°04'52"	S33° 03' 30"E	25.03

Civil Engineering
Surveying & Beyond
Boundaries Unlimited Inc.
923 Cooper Ave., Ste. 201
Glenwood Springs, CO 81601
(T) 970.945.5252
www.bu-inc.com

Subsurface Utility Engineering (SUE)
Required Project: *N/A*
If Yes, SUE Certification by:
Firm: *N/A*
Job #: *N/A*
Date: *N/A*
Engineer or Surveyor Seal

Client Information:
SIENA LAKE, LLC
PO BOX 5485
EAGLE, CO 81633
XXX.XXX.XXXX



811
Know what's below.
Call before you dig.

Sienna Lake PUD 5th Amendment
Excluding Tract: MU-3A, Lots 14-23 Block 1 and Lots 1-12 Block 2
Final Plat

Revision

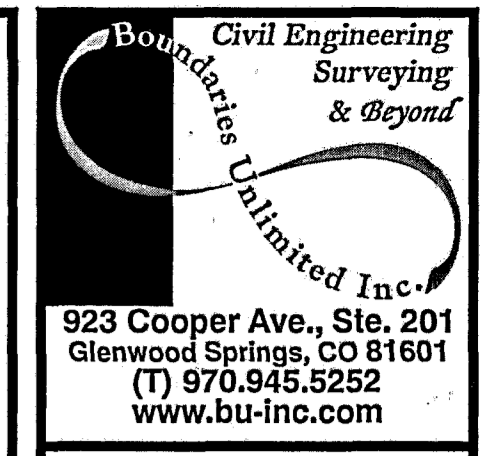
No.	Date	By	Appr.	Addressed comments from town
1	1/15/2026			

PROJECT NO. 20040
Designer: BU
Checker: APV
Date: 1/15/2026

Sheet **PL-3**

File Name: sienna lake plat 5th amendment.dwg

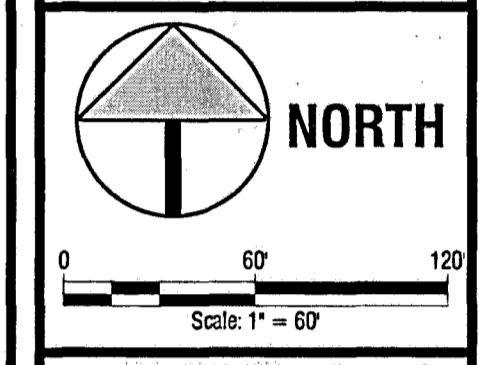
202601704



923 Cooper Ave., Ste. 201
Glenwood Springs, CO 81601
(773) 970-9455
www.bu-inc.com

Subsurface Utility Engineering (SUE)
Required Project: N/A
If Yes, SUE Certification by:
Firm: N/A
Job #: N/A
Date: N/A

Client Information:
SIENA LAKE, LLC
PO BOX 5485
EAGLE, CO 81631
XXXXXX



Know what's below.
Call before you dig.

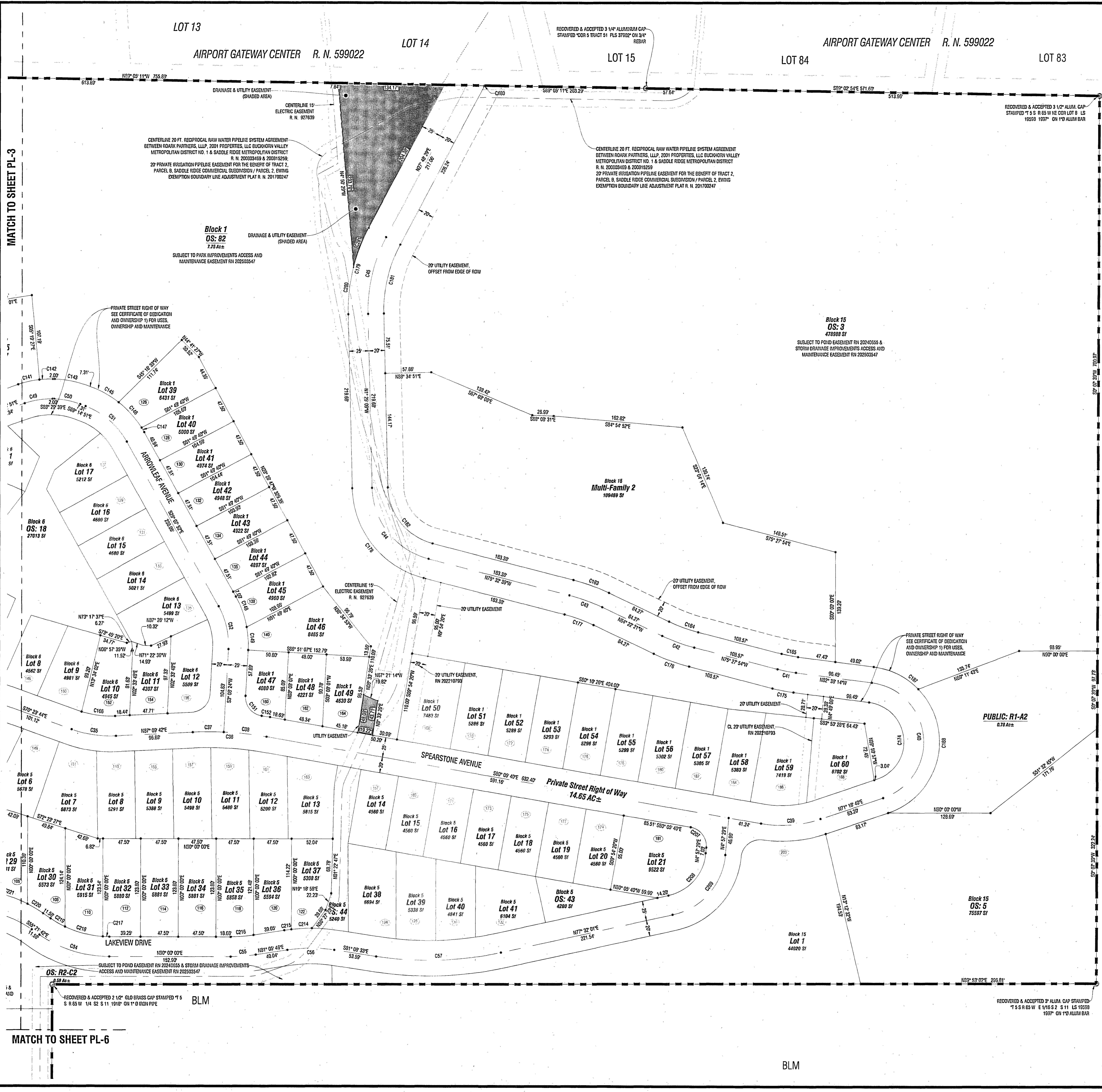
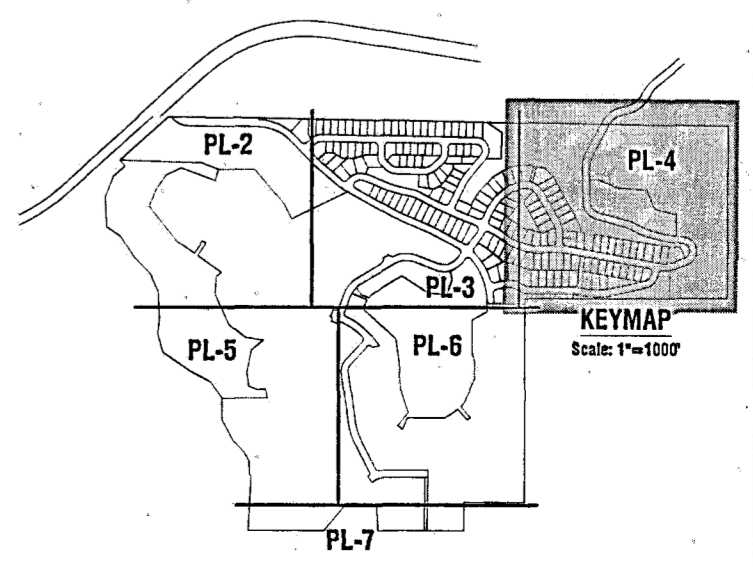
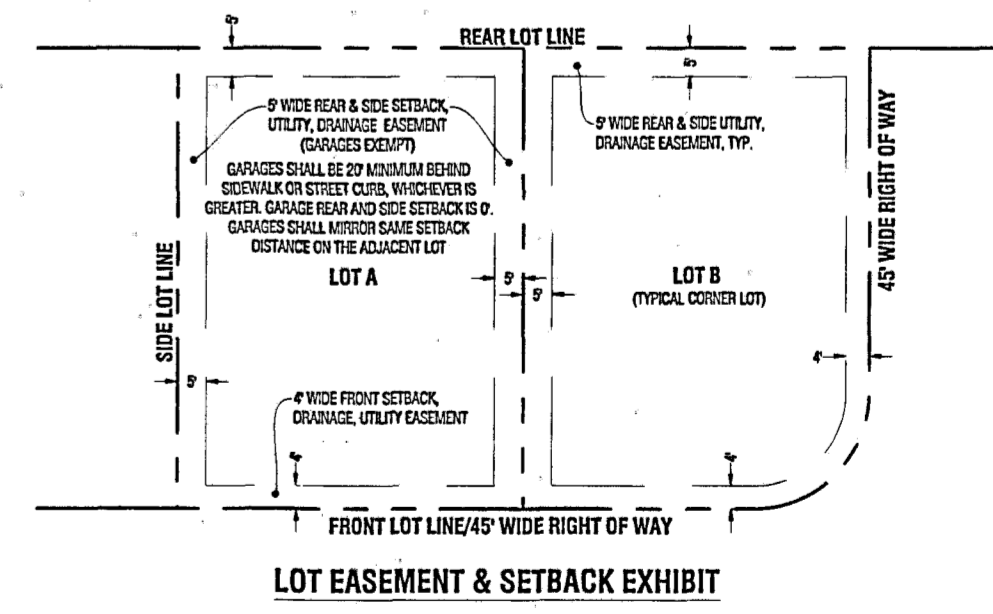
Sienna Lake PUD 5th Amendment
Excluding Tract: MU-3A, Lots 14-23 Block 1 and Lots 1-12 Block 2
Final Plat

By	Revision	Addressed comments from town
APL	1	

No.	Date	Sheet
1	7/15/26	1
2		2
3		3
4		4
5		5
6		6
7		7
8		8
9		9

PROJECT NO. 20240	Sheet
Designer: BUI	
Checker: APL	
Date: 12/28/23	

PARCEL CURVE DATA					
SEGMENT	LENGTH	RADIUS	DELTA	CHORD DIR.	CHORD LEN.
C35	58.00	145.00	22°29'34"	S81°37'01"E	58.43
C36	93.42	420.00	12°44'58"	S59°27'59"E	93.23
C37	38.04	420.00	5°18'45"	S59°49'05"W	38.93
C38	54.47	420.00	7°25'52"	N33°49'39"W	54.44
C39	76.00	153.39	28°24'42"	N53°39'30"E	75.29
C40	201.52	75.00	153°55'54"	N5°39'47"W	145.14
C41	23.78	180.00	7°10'20"	N79°03'04"W	23.77
C42	42.59	220.00	11°05'33"	N59°59'07"W	42.53
C43	43.87	225.00	11°10'18"	N59°57'30"W	43.80
C44	122.90	95.00	74°07'30"	N33°28'54"W	114.51
C45	100.75	197.50	29°13'37"	N13°11'40"E	99.69
C46	35.91	100.00	20°34'50"	N31°19'09"E	35.72
C50	33.59	100.00	19°14'48"	S78°52'15"E	33.43
C51	70.02	100.00	40°05'50"	S49°11'22"E	68.59
C52	56.32	100.00	32°18'17"	S12°59'44"E	55.59
C54	93.71	155.00	34°33'10"	S72°49'51"E	92.29
C55	31.69	205.00	8°54'14"	N53°32'53"E	31.83
C56	59.59	195.00	17°29'50"	N59°50'44"E	59.32
C57	157.87	432.28	20°55'27"	N39°09'04"E	155.99
C141	27.62	125.00	12°39'29"	N77°15'39"E	27.56
C142	17.27	125.00	7°50'01"	N57°32'51"E	17.26
C143	41.59	125.00	19°14'48"	S78°52'15"E	41.79
C145	37.63	125.00	17°14'47"	S59°37'23"E	37.49
C146	43.32	125.00	19°51'20"	S42°04'25"E	43.10
C147	6.59	125.00	3°00'52"	S59°38'18"E	6.59
C148	41.04	125.00	18°48'42"	S19°43'31"E	40.86
C149	23.39	125.00	13°27'59"	S3°39'23"E	23.30
C151	35.44	24.00	84°39'07"	S59°09'33"E	32.31
C152	10.62	445.00	1°22'03"	N59°40'41"W	10.62
C166	42.59	120.00	20°16'59"	N32°04'50"W	42.39
C174	134.35	50.00	153°55'54"	S5°39'47"E	97.43
C175	28.91	215.00	7°10'20"	S79°03'04"E	28.90
C176	47.43	245.00	11°05'33"	S59°59'07"E	47.39
C177	39.00	200.00	11°10'18"	S59°57'30"E	38.93
C178	155.29	120.00	74°07'30"	S33°28'54"E	144.64
C179	113.50	222.50	29°13'37"	S13°11'40"W	112.27
C180	0.99	127.50	0°29'52"	N28°01'29"E	0.99
C181	90.54	177.50	29°13'37"	N13°11'40"E	89.57
C182	97.03	75.00	74°07'30"	N33°28'54"W	90.40
C183	47.77	245.00	11°10'18"	N59°57'30"W	47.69
C184	38.72	200.00	11°05'33"	N59°59'07"W	38.69
C185	21.27	267.43	4°33'27"	N79°03'04"W	21.27
C187	63.59	95.00	39°20'59"	N59°27'45"W	62.41
C188	191.67	95.00	115°55'59"	N13°30'42"E	160.78
C207	35.63	240.00	65°03'09"	N37°34'05"W	32.44
C208	76.00	60.00	72°34'31"	S41°14'45"W	71.02
C214	25.09	220.00	6°47'03"	S89°59'00"W	25.04
C215	9.00	220.00	2°20'41"	S32°10'05"W	9.00
C216	27.97	180.00	8°54'14"	S53°32'53"W	27.94
C217	8.29	129.59	3°39'29"	S59°10'37"E	8.29
C221	49.39	129.59	21°45'53"	N79°28'55"W	49.07
C219	20.99	129.59	9°14'15"	N59°58'40"W	20.93
C220	23.11	170.00	7°47'29"	N59°15'25"W	23.10
C221	50.24	170.00	16°55'53"	N71°37'04"W	50.09
C280	59.90	222.50	19°29'25"	N17°13'41"E	59.71
C281	53.60	222.50	19°48'12"	N20°54'23"E	53.47
C289	107.67	65.00	72°34'31"	N41°14'45"E	100.61

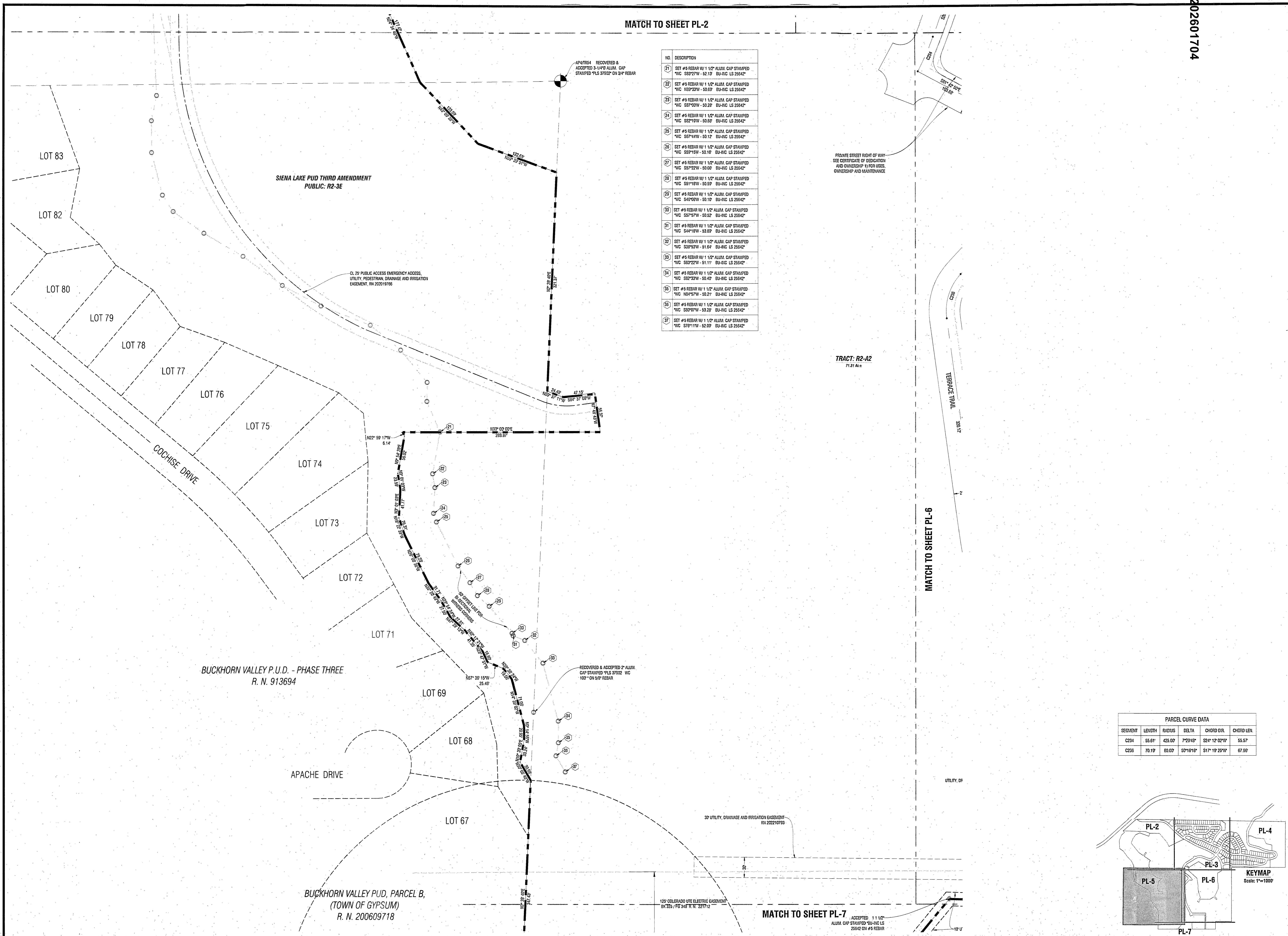


1/15/2026 2:47 PM
Sienna Lake PUD 5th Amendment.dwg

MATCH TO SHEET PL-6

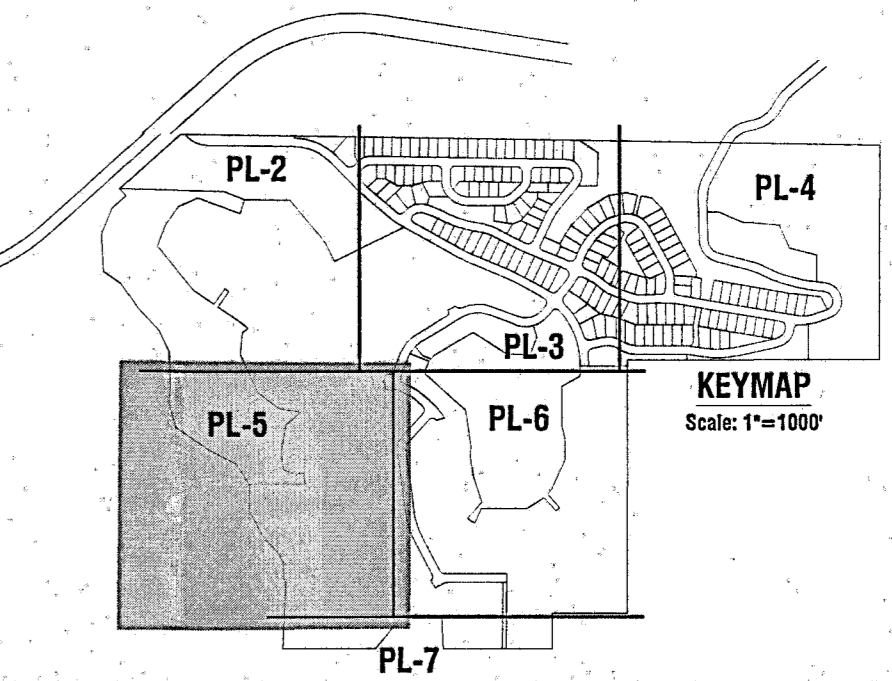
MATCH TO SHEET PL-3

BLM



NO.	DESCRIPTION
21	SET #5 REBAR W/ 1 1/2" ALUM. CAP STAMPED *WC 582°17'W - 52.13' BU-INC LS 25642"
22	SET #5 REBAR W/ 1 1/2" ALUM. CAP STAMPED *WC 103°55'W - 50.69' BU-INC LS 25642"
23	SET #5 REBAR W/ 1 1/2" ALUM. CAP STAMPED *WC 83°10'W - 50.28' BU-INC LS 25642"
24	SET #5 REBAR W/ 1 1/2" ALUM. CAP STAMPED *WC 52°19'W - 50.88' BU-INC LS 25642"
25	SET #5 REBAR W/ 1 1/2" ALUM. CAP STAMPED *WC 58°14'W - 50.12' BU-INC LS 25642"
26	SET #5 REBAR W/ 1 1/2" ALUM. CAP STAMPED *WC 52°19'W - 50.18' BU-INC LS 25642"
27	SET #5 REBAR W/ 1 1/2" ALUM. CAP STAMPED *WC 55°22'W - 50.08' BU-INC LS 25642"
28	SET #5 REBAR W/ 1 1/2" ALUM. CAP STAMPED *WC 53°18'W - 50.59' BU-INC LS 25642"
29	SET #5 REBAR W/ 1 1/2" ALUM. CAP STAMPED *WC 54°06'W - 50.10' BU-INC LS 25642"
30	SET #5 REBAR W/ 1 1/2" ALUM. CAP STAMPED *WC 55°15'W - 50.52' BU-INC LS 25642"
31	SET #5 REBAR W/ 1 1/2" ALUM. CAP STAMPED *WC 54°41'W - 53.89' BU-INC LS 25642"
32	SET #5 REBAR W/ 1 1/2" ALUM. CAP STAMPED *WC 53°53'W - 51.64' BU-INC LS 25642"
33	SET #5 REBAR W/ 1 1/2" ALUM. CAP STAMPED *WC 50°22'W - 51.11' BU-INC LS 25642"
34	SET #5 REBAR W/ 1 1/2" ALUM. CAP STAMPED *WC 50°20'W - 50.49' BU-INC LS 25642"
35	SET #5 REBAR W/ 1 1/2" ALUM. CAP STAMPED *WC 103°45'W - 50.21' BU-INC LS 25642"
36	SET #5 REBAR W/ 1 1/2" ALUM. CAP STAMPED *WC 58°07'W - 53.28' BU-INC LS 25642"
37	SET #5 REBAR W/ 1 1/2" ALUM. CAP STAMPED *WC 57°01'W - 52.09' BU-INC LS 25642"

PARCEL CURVE DATA					
SEGMENT	LENGTH	RADIUS	DELTA	CHORD DIR.	CHORD LEN.
C234	55.61'	425.00'	7°29'40"	S24°12'02"W	55.57'
C236	70.19'	80.00'	50°16'18"	S17°19'25"W	67.99'



202601704

Bounded Unlimited Inc.
Civil Engineering
Surveying
& Beyond

923 Cooper Ave., Ste. 201
Glenwood Springs, CO 81601
(773) 970.945.5252
www.bu-inc.com

Subsurface Utility Engineering (SUE)
Required Project: *N/A*
If "Yes" SUE Certification by:
Firm: *N/A*
Job #: *N/A*
Date: *N/A*

Engineer or Surveyor Seal

Client Information:
SIENA LAKE, LLC
PO BOX 5485
EAGLE, CO 81631
XXXXXX.XXXX

811
Know what's below.
Call before you dig.

Siena Lake PUD 5th Amendment
Excluding Tract: MU-3A, Lots 14-23 Block 1 and Lots 1-12 Block 2
Final Plat

GYPSPUM, COLORADO

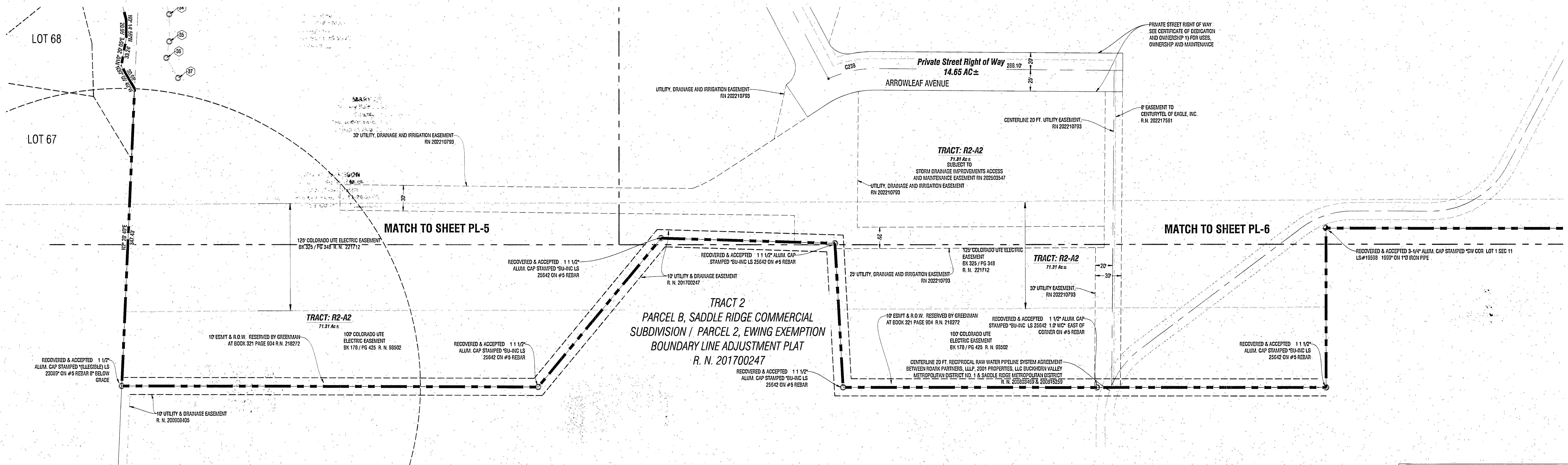
By	Revision	Date	Description
APL		1/15/2025	Addressed comments from town

PROJECT NO. 200609718
Designer: BUJ
Drafter: APL
Date: 12/29/25

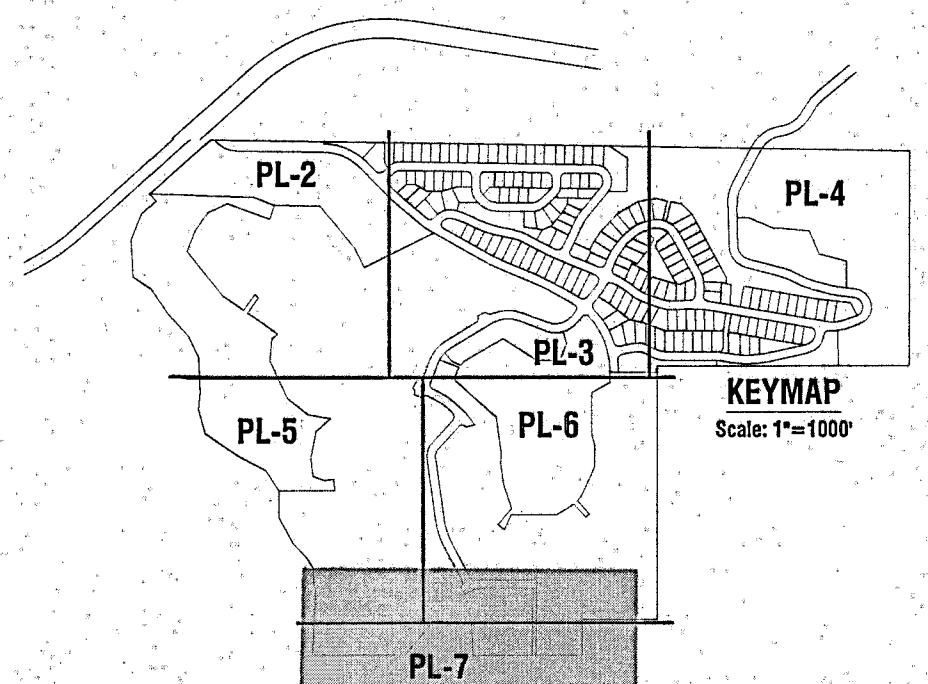
Sheet **PL-5**

File Name: siena lake plat 5th amendment.dwg

202601704



PARCEL CURVE DATA					
SEGMENT	LENGTH	RADIUS	DELTA	CHORD DIR.	CHORD LEN.
C238	55.91'	125.00'	29°34'57"	107°49'23"E	55.35'

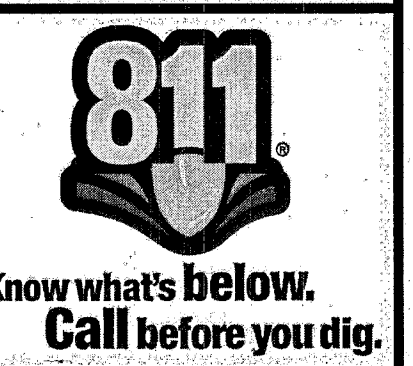
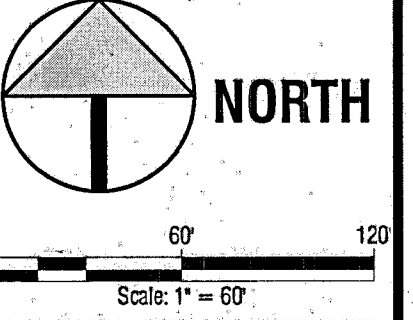


**Civil Engineering
Surveying
& Beyond**
Boundaries Unlimited Inc.
923 Cooper Ave., Ste. 201
Glenwood Springs, CO 81601
(T) 970.945.5252
www.bu-inc.com

Subsurface Utility Engineering (SUE)
Required Project: *N/A*
If "Yes", SUE Certification by:
Firm: *N/A*
Job #: *N/A*
Date: *N/A*

Engineer or Surveyor Seal

Client Information:
SIENA LAKE, LLC
PO BOX 5485
EAGLE, CO 81631
XXX.XXX.XXXX



Sienna Lake PUD 5th Amendment
 Excluding Tract: MU-3A, Lots 14-23 Block 1 and Lots 1-12 Block 2
 Final Plat

No.	Date	Revision	By	APL
1	11/15/25	Addressed comments from Down		
2				
3				
4				
5				
6				
7				
8				
9				

PROJECT NO. 20040
Designer: BU
Checker: AP
Date: 12/28/25

Sheet **PL-7**

File Name: sienna lake plat 5th amendment.dwg

N:\Projects\2020\20040-Sienna Lake PUD\dwg\Sienna Lake Plat 5th Amendment.dwg 1/15/2025 2:47 PM